

359000 359500 360000 360500 361000 361500 362000

We recommend this map be used with the Shuswap Trail Guide, which can be found at local visitor centres or online at: www.ShuswapTourism.ca

For detailed information about these trails, or to report trail issues visit: www.ShuswapTrails.com

Sicamous Lookout



TH: 11U 361598E 5634758N
Distance: 7.8 km (one way)

Recreation Points

- Main Trailhead
- Alternate Trailhead
- Chalet / Cabin
- Shelter
- Campsite
- Toilet
- Point of Interest
- Viewpoint
- Parking

System Trails (by difficulty)

- White Circle *Easiest*
- Green Circle *Easier*
- Blue Square *More Difficult*
- Black Diamond *Most Difficult*
- Dbl Black D *Expert Unltd*
- Other Trails

Transportation

- Highway
- Paved Road
- Gravel Road
- Railroad

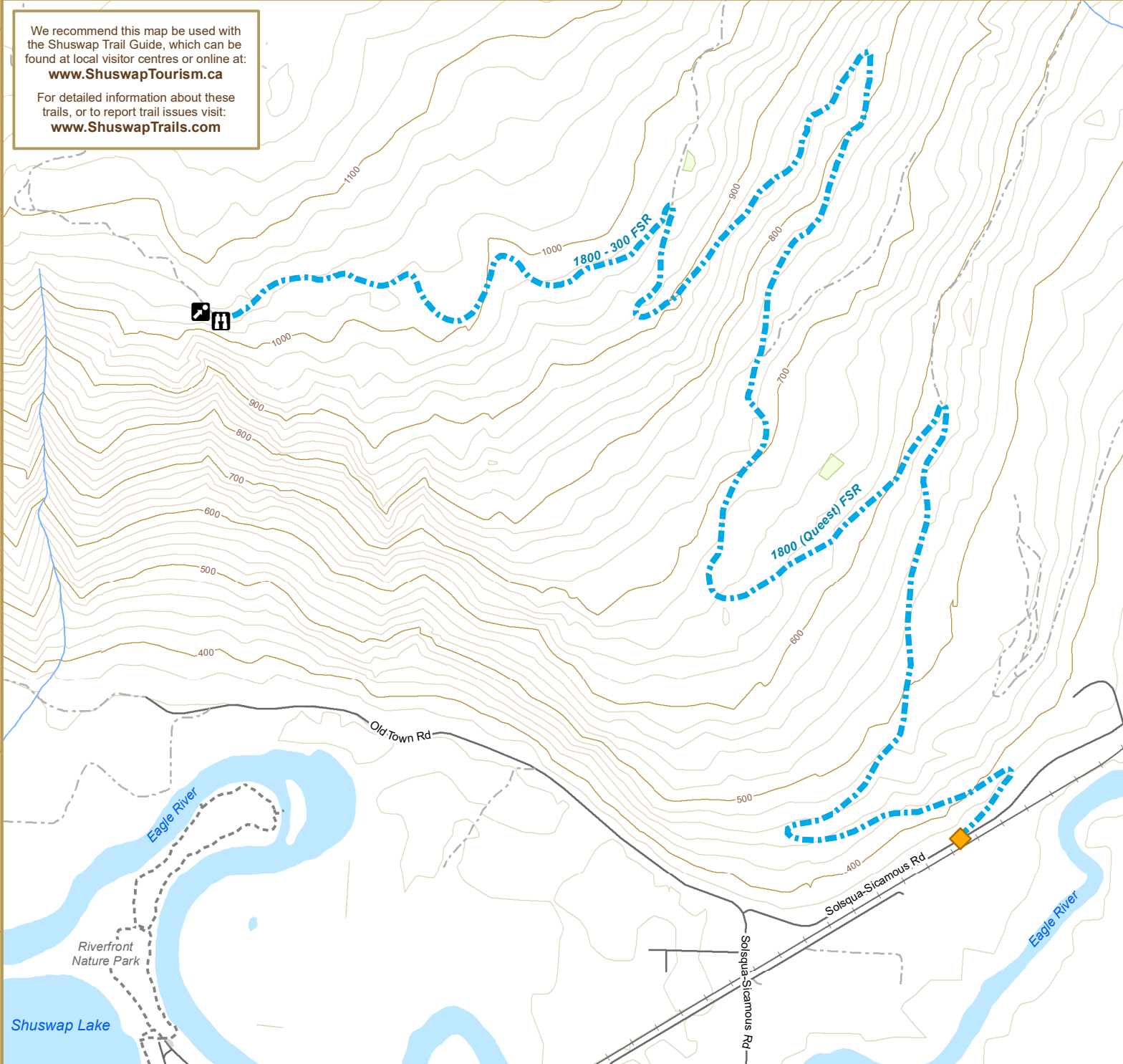
Water

- Stream
- Lake / River
- Wetland

Other Data

- Park / Rec Site
- 20 m Contour

Scale: 1:15,000
NAD83UTM11N
Published: 1/5/2018



359000 359500 360000 360500 361000 361500 362000

5637000
5636500
5636000
5635500
5635000
5634500

The extensive network of parks and trails in the Shuswap Region have been made possible through the collaborative efforts of many land managers and trail stewards working together.

Please refer to the Shuswap Trail Guide for details of the organizations involved in creating these trail experiences in the Shuswap.

This map was created by the CSRD GIS Department. No representation or warranty is made to the accuracy of the information. Do not rely solely on this map for navigation. Use of these trails is at your own risk. Always be prepared and plan accordingly.